

Maritime Solutions



Pacific MS (MS-1)

HDMI / SDI and KVM Switcher Integrated with Multiviewer

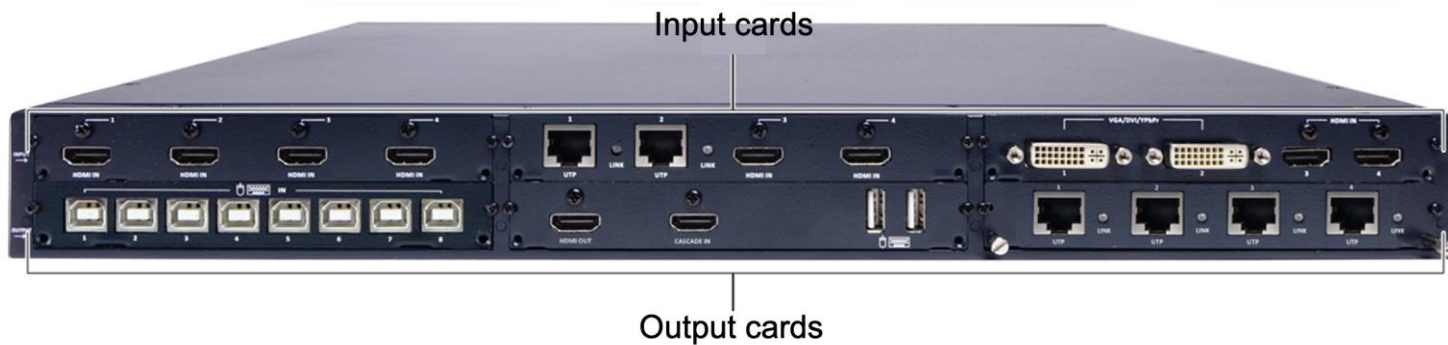
— Integrated Monitoring, Distribution, and Operation Solutions



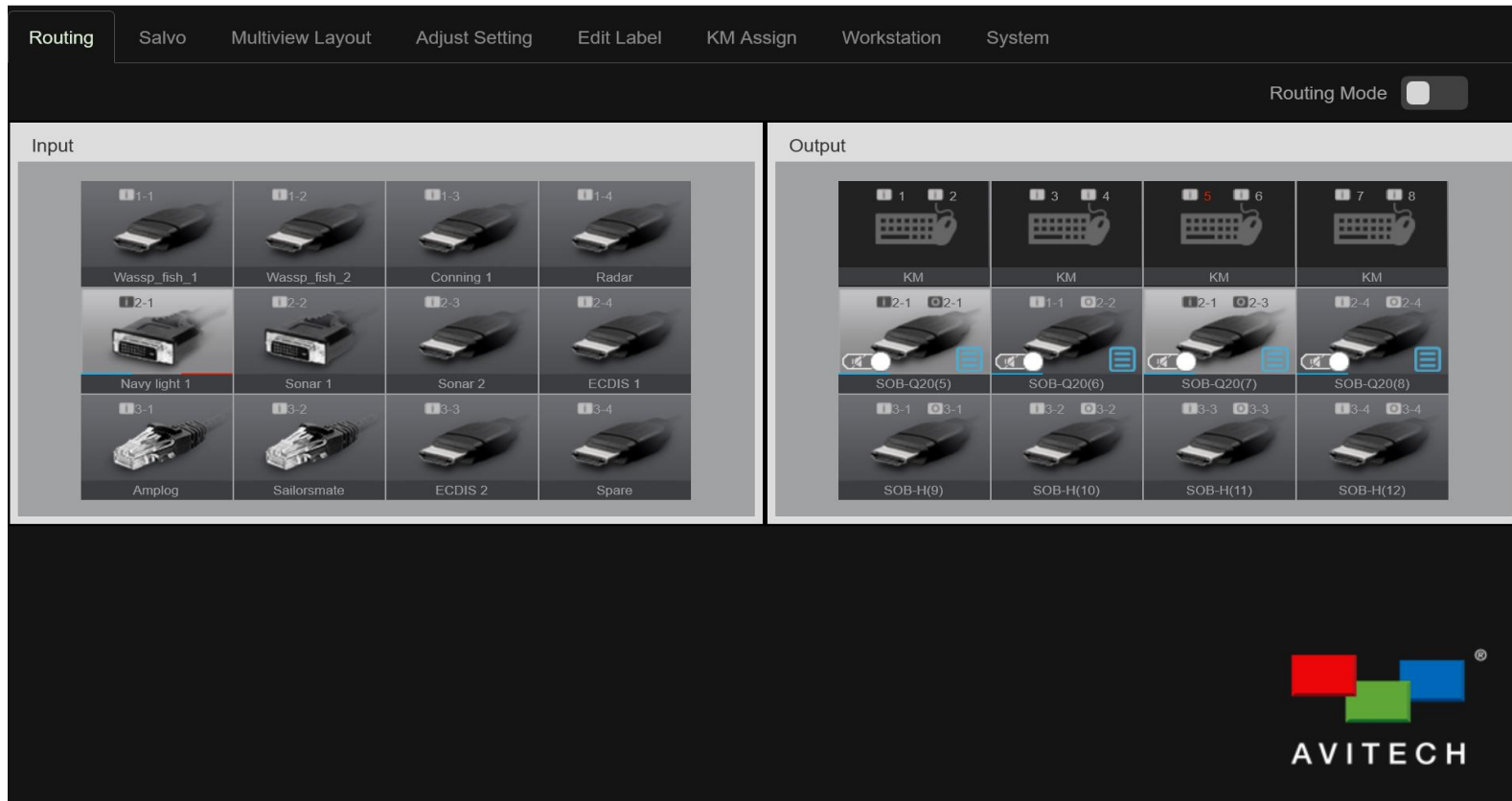
Pacific MS-1 Physical Overview



- 1 RS-232 (DB-9)
- 2 IP (RJ-45) port
- 3 Input/Output Routing buttons
- 4 Routing Execution buttons
- 5 Routing panel on/off button
- 6 Power supply port

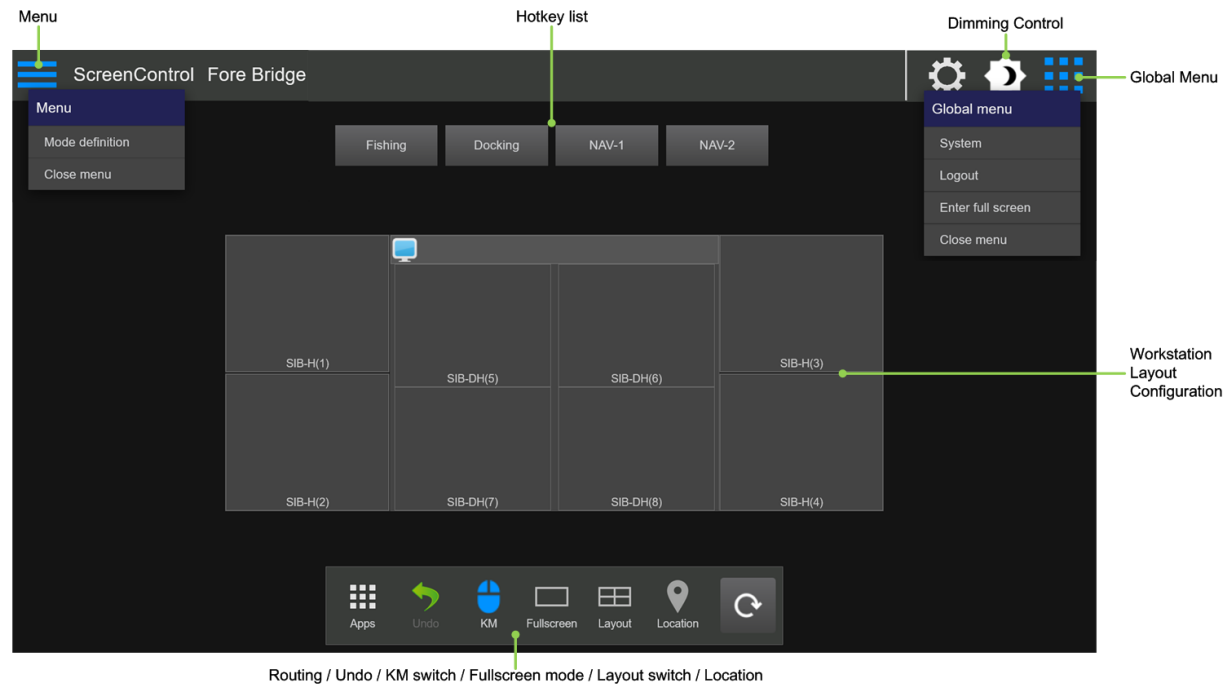


Pacific MS-1 Graphical User Interface (GUI)



The Pacific MS-1 has a web browser based graphical user interface (GUI) that the operator can use to setup and control the system. Connect the unit via LAN to a device with a Microsoft Edge, Mozilla Firefox, Google Chrome or Safari web browser, and enter the unit's IP address to bring up the GUI.

Pacific MS-1 Touch Panel Control



The Pacific MS-1 includes a web-browser based control HMI based on OpenBridge design guidelines. The HMI works on Microsoft Edge, Mozilla Firefox, Google Chrome and Safari web browsers, with touch operation on Android, Windows, and Mac devices. An operator can activate customizable presets, switch sources and mouse/keyboard control, change multiview layouts, make multiview windows fullscreen, and control brightness for approved monitors.

Currently can be used to control brightness on Hatteland Series X MMD G2 and MVD series monitors, ISIC monitors, AG Neovo QX and RX series monitors, and Samsung DBJ, QBH, QBH-N, QHH, and QMH series monitors.

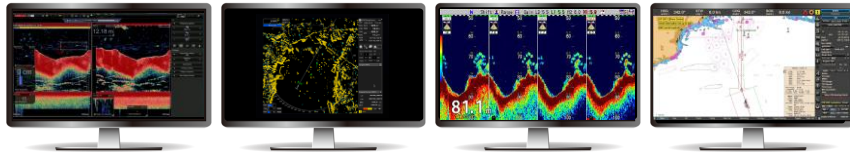
Please contact your Avitech representative if there are other monitor models that you would want to control from an Avitech system.

Pacific MS Modular Output Cards

Hot-swappable modular output cards support various arrangements and applications



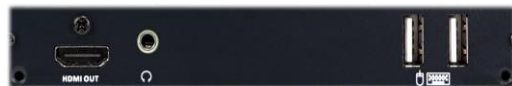
SOB-H: HDMI output card



SOB-HPW: Dual view



SOB-Q20: Quad view at 4K30



SOB-QPW: Quad view



SOB-T: Extended output (up to 100m)



Pacific MS Modular Input Cards

Available range of hot-swappable modular input cards enables addition of various source types and signals



SIB-H: HDMI input card



SIB-DH: DVI-I and HDMI input card



SIB-HL: HDMI input card with loopout



SIB-BNC: BNC input card with SDI loopout for analog and SDI (FHD, HD, SD)



SIB-T: Extended input card (up to 100m)

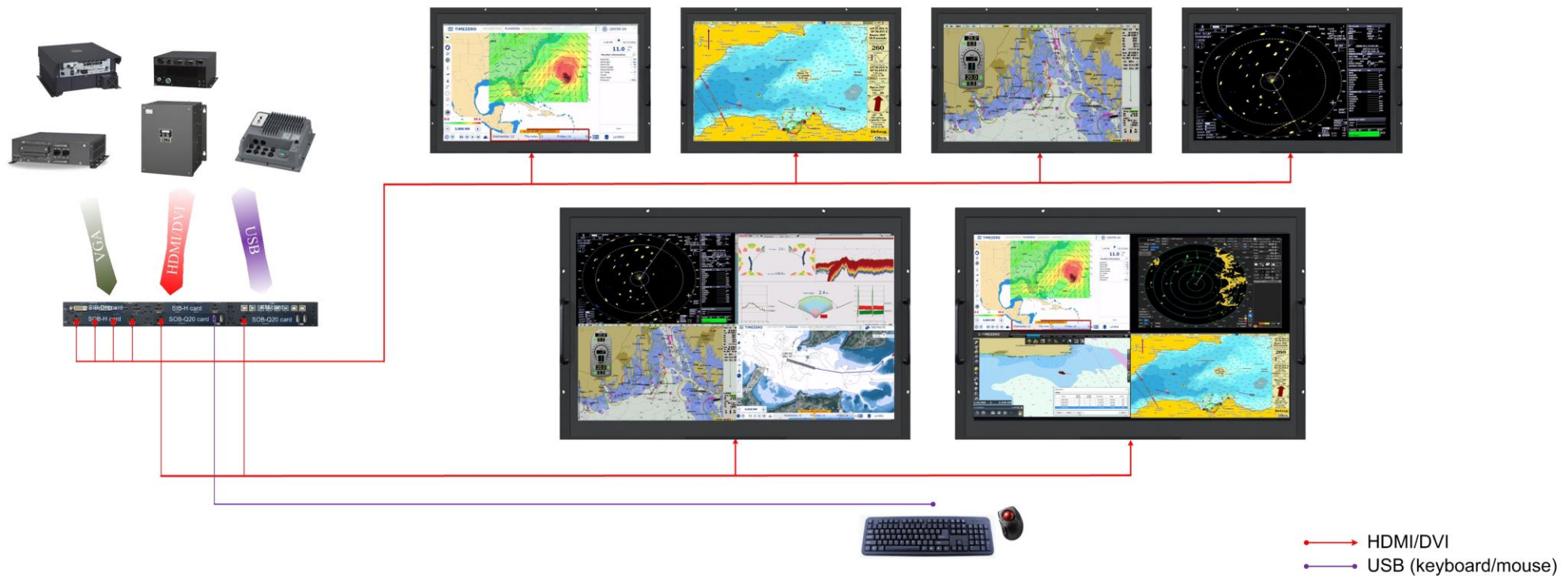


SIB-IP: Connect to Avitech KVM over IP ecosystem

Pacific MS-1 Marine Diagram Example

One six-monitor workstation with eight sources

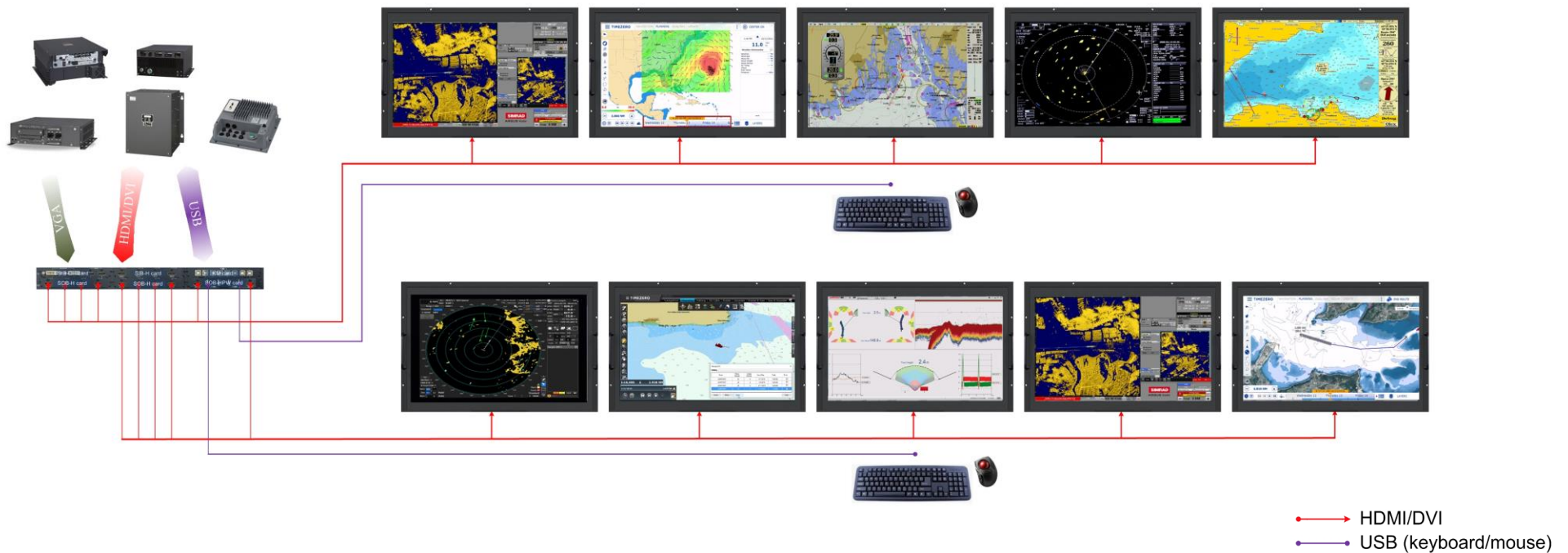
Up to eight source inputs and one workstation with two UHD quad-view outputs and four FHD single-view outputs



Pacific MS-1 Marine Diagram Example

Two five-monitor workstations with one dual-view output

Two workstations, each with one FHD dual-view output and four FHD single-view outputs



Avitech Marine Projects

Three single-monitor 4K quad-view workstations

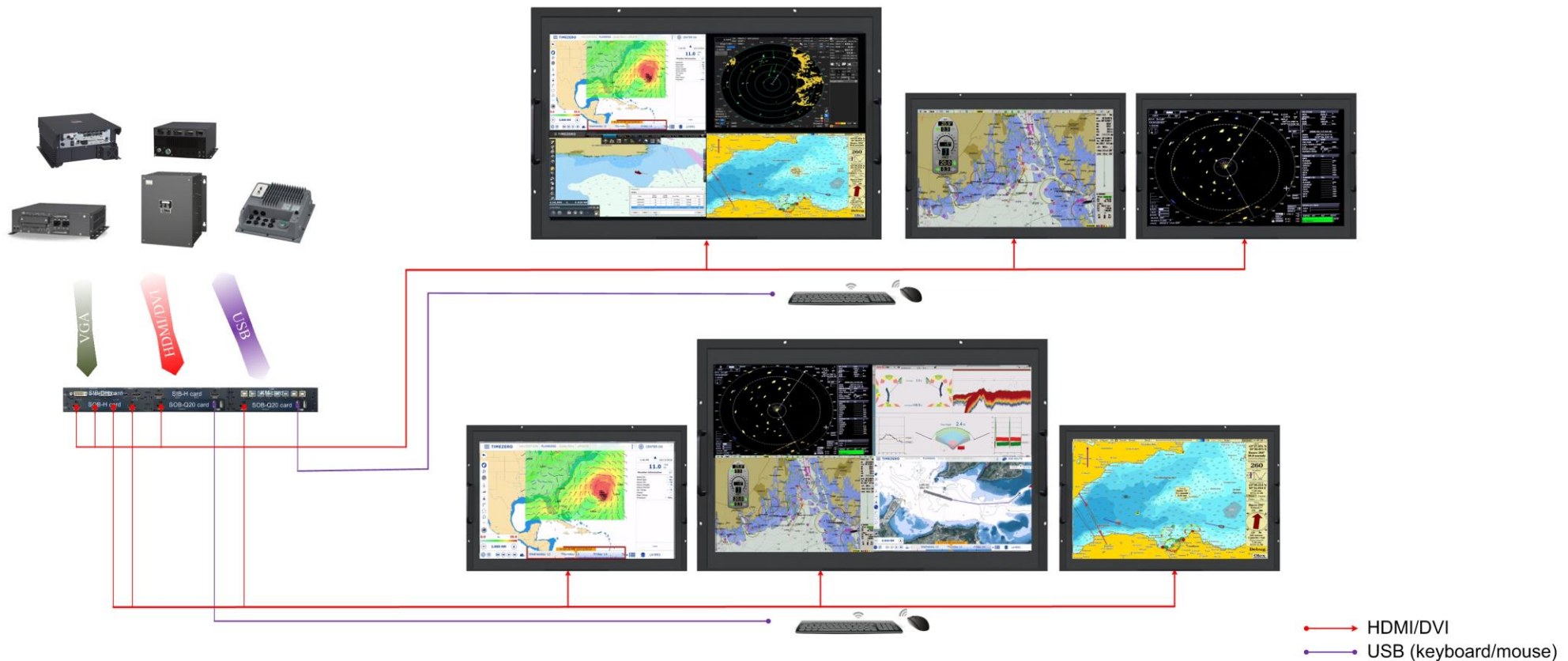
Three workstations, each with one UHD quad-view output



Avitech Marine Projects

Two three-monitor workstations with one quad-view

Two workstations, each with one UHD quad-view output and two FHD single-view outputs



Avitech Marine Compatibility

Examples of Marine Electronics In Use With Avitech Solutions

Canal Digital TV

FLIR M400XR Marine Thermal Camera

Furuno TZtouch2 Multifunction Display

Furuno CI-88 Doppler Sonar Current Indicator

Furuno FSV-30 Sonar

Furuno FSV-84 Sonar

Furuno FCV-1900 Fish finder

Furuno FAR-2218 Marine Radar

Furuno FAR-21x7-BB Series Radar

JRC JAN-9201 ECDIS

JRC JFC-180BB Echo Sounder

JRC JLN-652 Doppler Current Meter

JRC JMR-5400 Radar

Koden MDC-7012 Black Box Marine Radar

Koden MDC-7025 Black Box Marine Radar

Koden CVS-FX2BB Black Box Echo Sounder

Kaijo Sonar

Marport Trawl Sensors

MaxSea - Nobeltec TIMEZERO

OLEX Fishery Chart Software

Raymarine MFD

Scanmar Catch Control System

Scantrol iSYM Trawl Control System

SeaPix Sonar

Simrad ES70 Echo Sounder

Simrad ES80 Echo Sounder

Simrad RA83P Radar

Simrad FS70 Trawl Sonar

Sodena ECDIS

Transas ECDIS

Wesmar Trawl Sonar

WASSP Multibeam Sonar

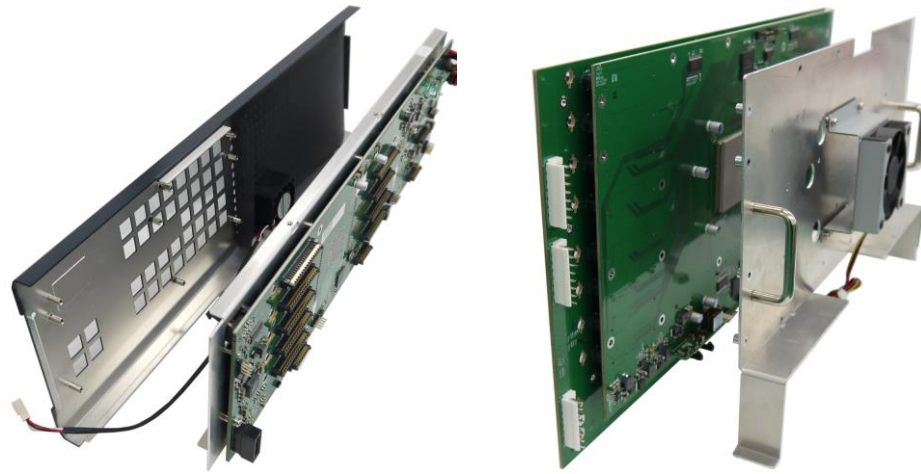
Securing HDMI Cables



The two-piece Avitech HDMI hook prevents the HDMI cable from sliding out of the port, and lets the user easily remove the HDMI cable when needed. This provides maritime operators with peace of mind, knowing that HDMI connections are secured in rough conditions and prolonged vibration.



Reliability and Redundancy



Robust Design

Rigorously tested heat-management systems ensure dependable operation in extreme environments. Certified to IEC-60945 specifications for vibration, humidity, and temperature.



In-System Alerts

Built-in sensors keep watch 24/7

System

- General
 - Enable Power Supply Alert Monitor
- OSD Option
 - PSS IP address: 0 . 0 . 0 . 0 (for Pacific MS-2/-3 only)
- Network
 - PSS port number: 0 (for Pacific MS-2/-3 only)
- Date and Time
- Alerts Display
 - Warning interval: Display Hide
 - Power alert: 10 seconds 1 minute
- System Information
 - Enable Pacific MS Alert Monitor
- About
 - Warning interval: Display Hide
 - Fan: 10 seconds 1 minute
 - Temperature: 10 seconds 1 minute
 - Current temperature: 45°C (113°F)
 - Used Time: 0 year 1 day 12 hour (36 hours)

Apply Cancel OK

Hot-swappable Cards

Modular design maximizes system uptime



Avitech Marine Projects



Company Overview

Headquartered in Redmond, Washington, Avitech International Corporation was founded in 1995 to address the growing demands faced in monitoring. We focus exclusively on the design, development and manufacture of multiviewers and their enhancing peripherals for a broad range of customers in the information technology, professional AV, marine electronics, television broadcast, and the surveillance industries. With over 20+ years of experience in the field and tens of thousands of units in private and public sectors, Avitech provides industry-recognized and award-winning solutions in dynamic markets.



History & Milestones

- 1995 ▶ Avitech International Corporation founded
- ▶ Meeting with ABC to discuss the concept of Virtual Wall Monitor

- 1997 ▶ Partnership with Seattle KOMO TV Station



- 2000 ▶ Featured editorial front page coverage on Television Broadcast, Oct 2000 Issue

- ▶ First ever editorial coverage in trade magazine about multiviewers



- 2001 ▶ Showcased world's largest Virtual Monitor Wall (120x50" screens) in Tulsa, Oklahoma

- 2003 ▶ Introduced Application Specific Integrated Circuit (ASIC) design for multiviewer performance

- 2005 ▶ Achieved RoHS Compliance (environmental standards test for materials hazardous to the environment)



- 2006 ▶ MCC-8004UE selected for World Cup football games in Germany

- 2007 ▶ Rainier series wins InfoComm Rental & Staging "Best Video/Broadcast Product Award"



- 2008 ▶ MCC-8004UE selected for European football games in Austria and Switzerland

- 2010 ▶ MCC-8004UE selected for World Cup football games in South Africa



- 2011 ▶ Editorial featured in Religious Product News e-newsletter: Redefining Multi-tasking

- ▶ Rainier 16U1V field report editorial featured in Broadcast Engineering November Issue

- 2012 ▶ Rainier 3G selected for European football games in Poland and Ukraine



- 2013 ▶ US patent granted - "Control System and Method for Controlling Information Processing Devices"

- 2014 ▶ US patent granted - "Securing Device for Securing of Transmission Cable with Connector" (HDMI Hook)
- ▶ Rainier 3G Plus selected for World Cup football games in Brazil

- 2016 ▶ Pacific MS non-compressed KVM and video matrix switcher introduced

- 2018 ▶ Launched the Avitech KVM and AV over IP ecosystem

- 2019 ▶ First Avitech KVM over IP ecosystem installation, including 66 screen video wall
- ▶ First installation of the Pacific MS-6 32x32 matrix switcher

Product Series Overview

Titan

Video Wall Processor / Card-Based Multiviewer

Newer generation video wall processor, TitanWall oIP and TitanWall ES series with open and distributed architecture deliver high-performance wall solutions with scalability. Installation of multiple walls at various sites on dedicated gigabit LAN also concurrently supports hundreds of user spaces in video wall management.

Pacific

Matrix Switcher / Converter / Extender / Distribution Amplifier

The Pacific family of products enables facility-wide integration and ensures consistent and powerful performance. The latest KVM and AV over IP solutions support ecosystems with signal conversion, extension, distribution, switching, monitoring, and operation.

Sequoia

Multiviewer with KVM Switcher

The Sequoia series adds another dimension of versatility to multiviewing with the integration of a switching function for keyboard / mouse control, audio and USB hubs with support of touch-screen operation.

Phoenix

GUI / Touch-Screen Control Panel

The Phoenix family includes easily configurable human interface devices and graphical user interface programs.

Rainier

Card-Based Multiviewer

The Rainier series features high quality multiviewers exclusively for processing SDI (3G/HD/SD) and CVBS (NTSC/PAL) signals.





Contact Avitech

Phone: 425.885.3863

Toll Free: 1.877.AVITECH

Fax: 425.885.4726

15377 NE 90th Street Redmond, WA 98052, USA

www.avitechvideo.com

sales@avitechvideo.com

Specifications and data are subject to change without notice.

Copyright ©2020 Avitech. All Rights Reserved.